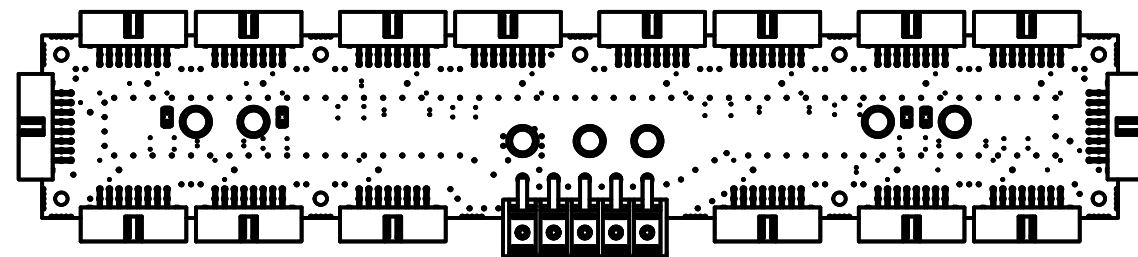
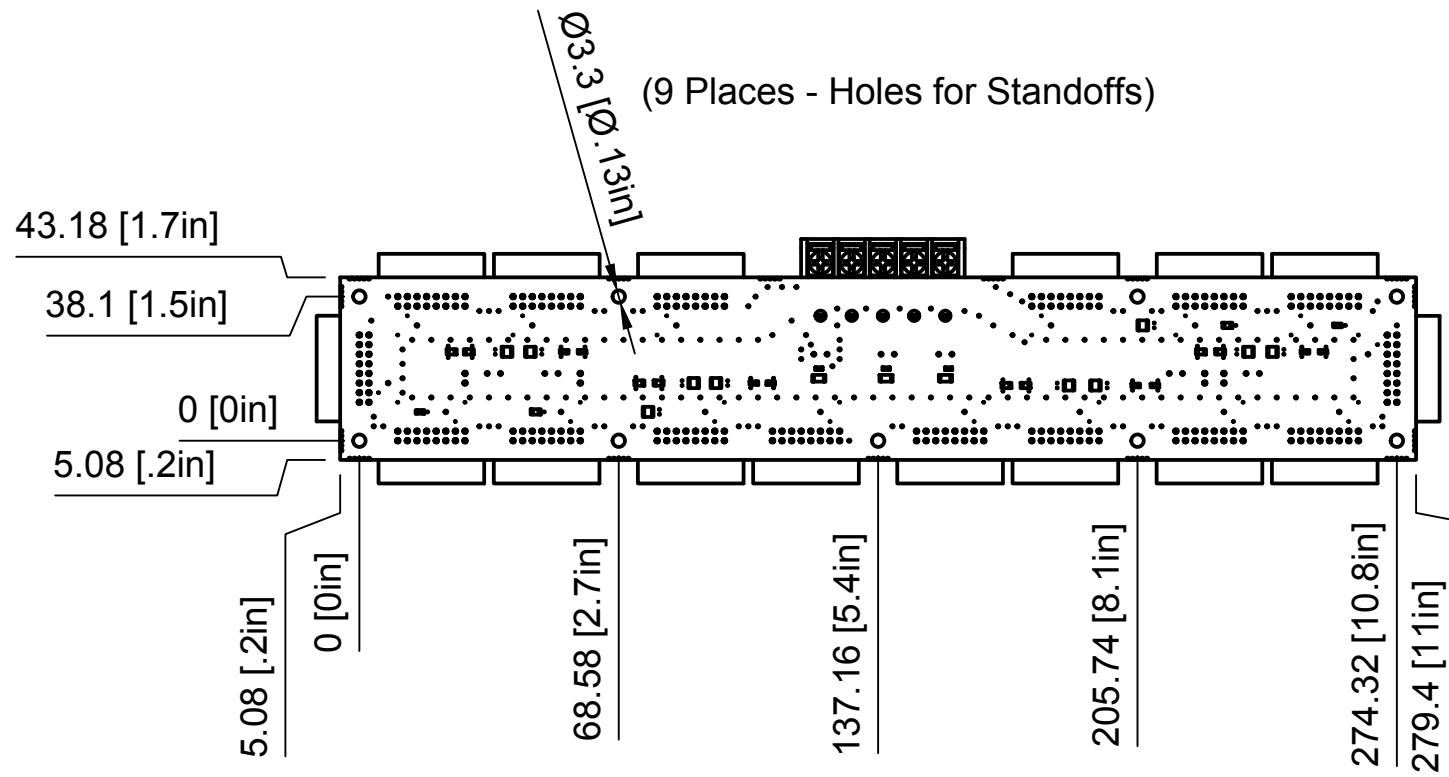
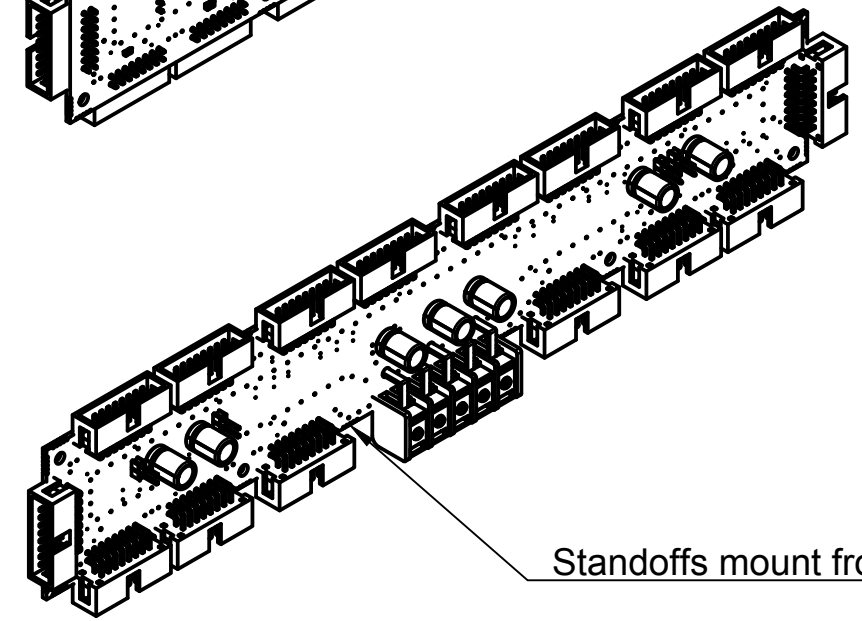
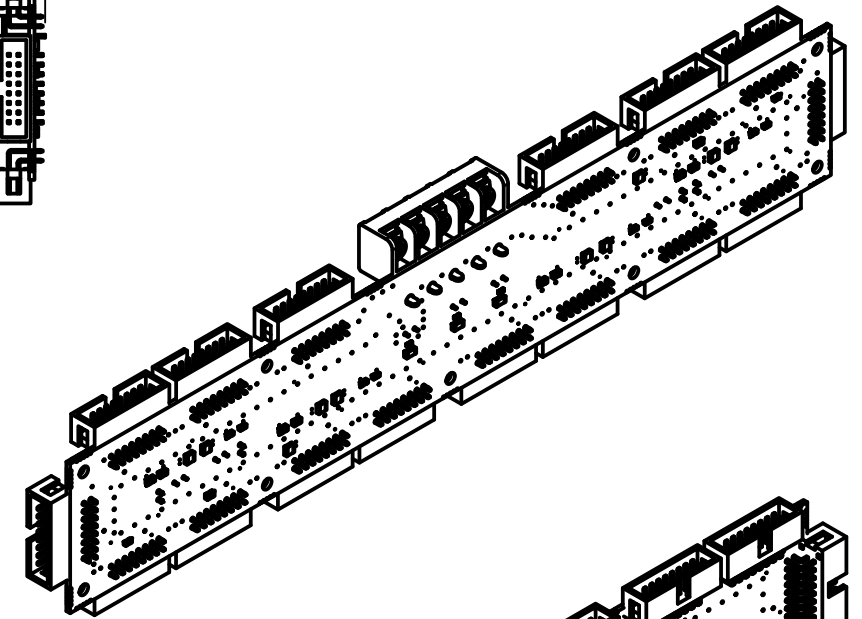
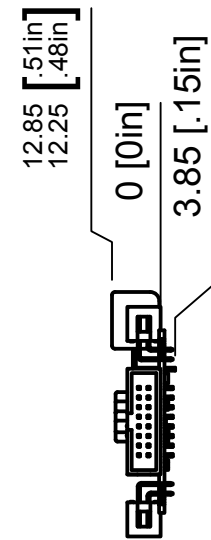


LIBB Hole Locations and Sizes



Notes:
 Keep 25.4 mm [1 inch] perimeter clear around PCB edge for power connections.



Dept. Engineering	Technical reference	Created by J Loffink	4/29/18	Approved by J Loffink	4/29/18
scale: 1:2 units: mm[inches] Sheet: B size 11x17		Document type CAD		Document status Release	
		Title LIBB_A2_Drawing Low Impedance Bus Board Ver. A2		DWG No. 21K00001	
		Rev. A	Date of issue 4/29/18	Sheet 1/1	

